



WE DISCOVER, WE GROW

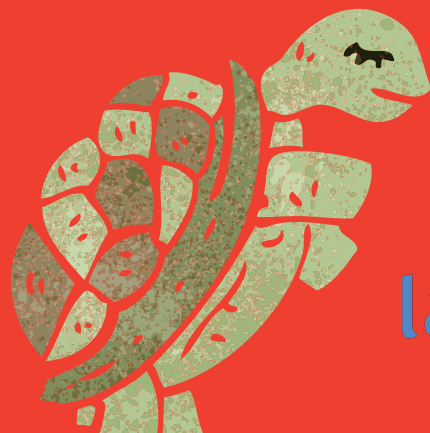
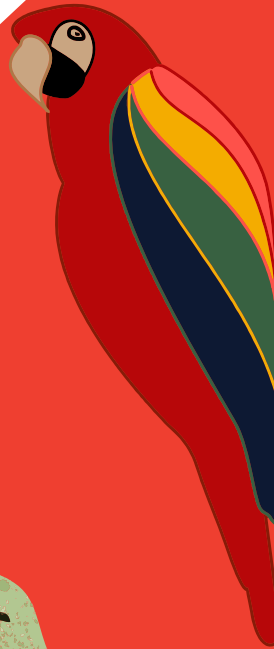
Girlguiding

London & South East England



Rainbows

Go
W I L D



Information pack

April 2019

laser



What is Rainbows Go Wild?

Rainbows Go Wild is your Rainbow unit visiting a zoo, wildlife park or aquarium to find out more about the animals found there. We are also encouraging you to hold a sleepover, perhaps with your own wildlife theme!

We want as many Rainbow units across Girlguiding LaSER as possible to take part in Rainbows Go Wild. In July, we will be sending out more information in the activity pack, which will also contain all the activities, advice and ideas you'll need to make this event happen for your Rainbows.

This information pack includes an FAQ section with all the important information you'll need to know. We also have the details of the 21 venues (listed below) for you to pick the one your unit will go wild at! If there's something we haven't thought of, get in touch on info@girlguidinglaser.org.uk.

Please read through this information pack and register your interest [here](#).

Where will your Rainbows go wild?

Battersea Park Children's Zoo	Kent Life
Bird World	Merrist Wood
British Wildlife Centre	Paradise Wildlife Park
Chessington World of Adventures	Port Lympne
Drusillas Park	Sealife London Aquarium
Eagle Heights	Tilgate Nature Centre
Fisher's Farm Park	Wildwood Trust
Hanwell Zoo	Wingham Wildlife Park
Hobbedown	WWT Arundel
Howletts	WWT London Wetland Centre
	ZSL London Zoo



Venues and prices

Venue	Battersea Park Children's Zoo, Chelsea Bridge Gate, Battersea, London, SW11 4NJ
Rainbows Go Wild Price	Child: £6.50 Adult: Free accompanying adult per 5 children (additional adults £9.50).
Activities available	Workshops: a short introductory talk, game, tour and artefact show and tell.
Website	www.batterseaparkzoo.co.uk
Nearby attractions	Go Ape, Battersea
Standard entry fee	Child: £7.50 Adult: £9.50

Venue	Birdworld, Holt Pound, Farnham, Surrey, GU10 4LD
Rainbows Go Wild Price	Child: £6.50 Adult: £7.50
Activities available	Bird displays, watch the penguins being fed. Visit the Jenny Wren Farm for animal encounters. Enjoy a ride on the train. Follow a trail around the site
Website	www.birdworld.co.uk
Nearby attractions	Go Ape, Alice Holt
Standard entry fee	Child: £12.95- £13.95 Adult: 15.95

Venue	British Wildlife Centre, Eastbourne Road, Newchapel, Lingfield, Surrey, RH7 6LF
Rainbows Go Wild Price	Child: £8.50 with One Child Goes Free per unit Adult: £12
Activities available	Activity area suitable for ages 3-6 in Pip's Corner picnic area. A schedule of keeper talks throughout the day, where visitors can see the animals up close and learn all about them. Times can be found on the website.
Website	www.britishwildlifecentre.co.uk
Nearby attractions	National Trust Standen Southern Pursuits
Standard entry fee	Child: £8.50 Adult: £12



Venue	Chessington World of Adventures, Leatherhead Road, Chessington, Surrey, KT9 2NE
Rainbows Go Wild Price	Child: £18 (Full park) Adult: £23.50 (Full park) Child: £8 (Zoo only) Adult: £8.50 (Zoo only). One FREE Leader place with every 5 primary aged children tickets purchased. PRICES SUBJECT TO CHANGE
Activities available	Chessington Zoo has over 1,000 exotic animals to see. There is also the Theme Park, Sea Life centre and daily shows
Website	www.chessington.com
Nearby attractions	Hobbledown Farm Skywalk Adventure
Standard entry fee	£50.50 on day entry charge

Venue	Drusillas Park, Alfriston, East Sussex, BN26 5QS
Rainbows Go Wild Price	£15.50 per person (child & adult) 1:6 free adult ratio.
Activities available	The zoo, play areas (Go Wild, Go Bananas, Get Wet & Amazon Adventure), Safari Express, Go Safari, Eden's Eye and Hello Kitty Secret Garden, Look & Learn About Animals Activity Badge Workbooks, Zoolympic and Animal Spotter Trail books. Attractions such as Vertical Limit, Panning for Gold, Dino Dig and Penguin Plunge incur additional costs.
Website	www.drusillas.co.uk
Nearby attractions	Cuckmere Haven Knockhatch
Standard entry fee	£20.50 per person (child & adult)


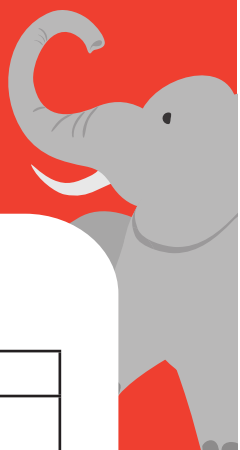



Venue	Eagle Heights, Lullingstone Lane, Eynsford, Kent, DA4 0JB
Rainbows Go Wild Price	Child: £5.95 Adult: Free entry on ratio of 1:5. (Any additional leaders £7.95).
Activities available	12noon flying demonstration, bird handling at 2pm (additional £2 per person - no need to pre-book) and then another flying demonstration at 3.30pm.
Website	www.eagleheights.co.uk
Nearby attractions	Lullingstone Roman Villa Lullingstone Park
Standard entry fee	Child: £5.95 Adult: £9.95

Venue	Fishers Farm Park, Newpound Lane, Wisborough Green, West Sussex, RH14 0EG
Rainbows Go Wild Price	£12.50 per person
Activities available	Tractor & trailer rides, ghost tunnel, Skyfall, Fishers train, Merry-Go-Rounds, climbing wall, Squirrel scramble, Animal handling, Farm Show, mazes, toboggan run, all sorts of things to climb on, loads of indoor soft play and adventure play. Plus a small extra charge (£1.00 per token) for pony rides, quad bikes and mini tractors.
Website	www.fishersfarmpark.co.uk
Nearby attractions	South Downs National Park
Standard entry fee	£16.75 per person



Venue	Hanwell Zoo, Church Rd, Hanwell, London, W7 3BP
Rainbows Go Wild Price	Child: £2 Adult: Free at a ratio of 1:6. Additional adult £4
Activities available	Known locally as the 'Bunny Park', Hanwell Zoo is the home to a selection of birds, mammals and a seasonal butterfly house as well as other cheeky residents like Hatari the porcupine.
Website	www.hanwellzoo.co.uk
Nearby attractions	
Standard entry fee	Child: £1.50 Adult: £3.50


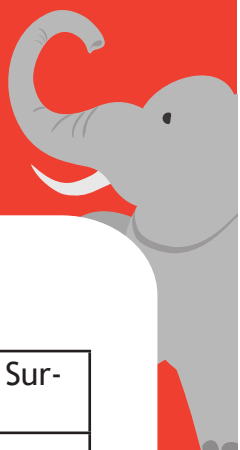



Venue	Hobbledown, Horton Lane, Horton, Surrey KT19 8PT
Rainbows Go Wild Price	Child: £13.60 Adult: £12.75
Activities available	Play areas, walk-through animal enclosures,
Website	www.hobbledown.com
Nearby attractions	Chessington World of Adventures
Standard entry fee	Child: £16 Adult: £15

Venue	Howletts, Bekesbourne Ln, Bekesbourne, Littlebourne, Canterbury CT4 5EL
Rainbows Go Wild Price	Child: £9 Adult: 1 FREE leader for every 7 rainbows. (Additional adults £9)
Activities available	Howletts has over 400 animals across 50 species within their 100 acre park.
Website	www.aspinallfoundation.org/howletts
Nearby attractions	Wingham Wildlife park Canterbury town
Standard entry fee	Child: £19.95 Adult £22.95

Venue	Kent Life, Lock Lane, Sandling, Maidstone, Kent, ME14 3AU
Rainbows Go Wild Price	Child: £5 Adult: Free entry ratio of 1:5 (additional adults £7.95)
Activities available	See the historic houses, farmyard and farm animals. Enjoy Cuddle Corner, tractor/train ride and various 'meet the animals' activities.
Website	www.kentlife.org.uk
Nearby attractions	Leeds Castle Mote Park
Standard entry fee	Child: £8.25 Adult: £9.95


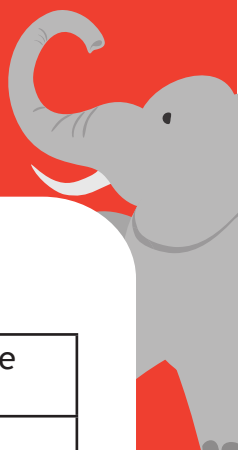



Venue	Merrist Wood College, Holly Lane, Worplesdon, Guildford, Surrey, GU3 3PE
Rainbows Go Wild Price	Child: £7.20 per child
Activities available	Animal Encounters Tour plus farm visit: 2 hours
Website	www.merristwoodevents.co.uk/merrist-wood-animal-encounters
Nearby attractions	Woking Miniature Railway
Standard entry fee	Child: £8

Venue	Paradise Wildlife Park, White Stubbs Ln, Broxbourne, Hertfordshire, EN10 7QA
Rainbows Go Wild Price	Child: £9.50 Adult: £9.50
Activities available	There are events and shows throughout the day plus meet the keeper sessions every 15 minutes and the new World of Dinosaurs.
Website	www.pwpark.com
Nearby attractions	East Herts Miniature Railway
Standard entry fee	Child: £19 Adult: £21.50


Venue	Port Lympne Hotel & Reserve, Aldington Rd, Lympne, Hythe, Kent, CT21 4LR
Rainbows Go Wild Price	Child: £9 Adult: 1 FREE leader for every 7 Rainbows. (Additional adults £9)
Activities available	Over 700 rare and endangered animals in 600 acres of park. Go on safari, visit dinosaur forest and enjoy animal talks.
Website	www.aspinallfoundation.org/port-lympne
Nearby attractions	Dymchurch amusement park Romney Hythe & Dymchurch Light Railway
Standard entry fee	Child: £22 Adult: £26



Venue	SEA LIFE London Aquarium, County Hall, Westminster Bridge Road, London, SE1 7PB
Rainbows Go Wild Price	Child: £14.70 Adult: £18.20 PRICES SUBJECT TO CHANGE.
Activities available	Enjoy talks and feeding times of the various animals found in the aquarium. Take a walk through the ocean tunnel and make a stop at Penguin point.
Website	www.visitsealife.com/london
Nearby attractions	London Eye Shrek's Adventure London
Standard entry fee	Child: £22 Adult: £27

Venue	Tilgate Nature Centre, Titmus Drive, Tilgate, Crawley, West Sussex, RH10 5PQ
Rainbows Go Wild Price	Child: £2.50 Adult: Free entry
Activities available	Trails around the nature centre and talks, feeds and engagement activities.
Website	www.crawley.gov.uk/pw/Leisure_and_Culture/Tilgate_Park/index.htm
Nearby attractions	Go Ape Crawley Goffs Park Light Railway
Standard entry fee	Child: £2.50 Adult: £3.50

Venue	Wildwood Trust, Herne Common, Herne Bay, Kent, CT6 7LQ
Rainbows Go Wild Price	Child: £6.75 Adult: 1 free adult for every 4 children. <i>Optional additional activities:</i> <i>Meet an animal £15 per group of 15 rainbows.</i> <i>1hour tour or workshop £40 per group of 30 rainbows</i>
Activities available	Over 200 native animals set in 40 acres of ancient woodland. Adventure playground with drop slide, tube slide, wild fort, tree-top towers.
Website	www.wildwoodtrust.org
Nearby attractions	Herne Bay Druidstone Park
Standard entry fee	Child: £9.95 Adult: £12.45

Venue	Wingham Wildlife Park, Rusham Road, Wingham, Kent, CT3 1JL
Rainbows Go Wild Price	Child: £14 Adult: £17
Activities available	A variety of animals and birds with educational talks throughout the day. Reptile House and Pet Village, Tropical House with birds, bats and butterflies, and indoor soft play area.
Website	www.winghamwildlifepark.co.uk
Nearby attractions	Canterbury
Standard entry fee	Child: £15 Adult: £18

Venue	WWT Arundel, Mill Road, Arundel, West Sussex, BN18 9PB
Rainbows Go Wild Price	Full day admission with pond dip - Child: £5.75 Adult: £10:60 (one free adult with every 5 paying children)
Activities available	An array of birds to view, playgrounds, Wetlands Discovery Boat Safari,
Website	www.wwt.org.uk/wetland-centres/arundel/
Nearby attractions	Arundel Castle
Standard entry fee	Child: £7.15 Adult £13.30 (Prices include gift aid)



Venue	WWT London, Queen Elizabeth's Walk, Barnes, London, SW13 9WT
Rainbows Go Wild Price	Child: £7.30 Adult: A free adult ratio of 1:5
Activities available	Hundreds of exotic swans, ducks and geese. Bespoke activities for the event run by learning team. 30 children per session.
Website	https://www.wwt.org.uk/wetland-centres/london/
Nearby attractions	
Standard entry fee	Child: £8.70 Adult: £14.30 (Prices include gift aid)

Venue	ZSL London Zoo, Regent's Park, London, NW1 4RY
Rainbows Go Wild Price	Child: £11.50 Adult: £18.41. (One free adult ticket with every 10 paying children).
Activities available	Daily talks, animal exhibits including Tiger Territory, Penguin Beach, Gorilla Kingdom and Land of the Lions.
Website	www.zsl.org/zsl-london-zoo
Nearby attractions	Madame Tussauds
Standard entry fee	Child: £19.50 Adult: £30 (prices do not include youth group discount)





Frequently Asked Questions

What & where is Rainbows Go Wild?

Rainbows Go Wild is taking place over the weekend of 12-13 October 2019. We want as many Rainbows across the region as possible to visit their local zoo, wildlife park or aquarium.

We are also encouraging you to hold a sleepover with your Rainbows over that weekend too.

Who can take part?

Any Rainbow unit in Girlguiding LaSER. Please note that Girlguiding policies will apply regarding large scale events (if applicable) and the sleepover event coordinator will need to have a Going Away With modules 1-4 license. Please consult the Girlguiding website or ask your local residential adviser if you are unsure.

What is the aim of the event?

An opportunity for Rainbow leaders to take their Rainbows outside of their unit meeting place and arrange a sleepover, with an activity pack to support planning which can be used again and again.

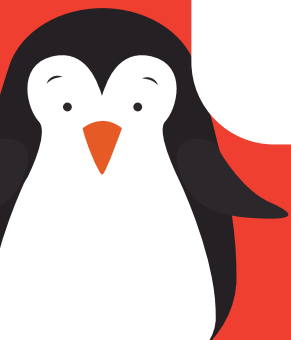
What is the format of the event?

Over the weekend of 12-13 October 2019, you will attend your local zoo (etc). You will also be invited to hold a sleepover. Whether you hold the sleepover on the Friday night and go to your chosen venue on the Saturday or hold your sleepover on the Saturday night and either go to your venue during that day or on the Sunday, it's up to you!

What are the costs and what does it include?

The cost will vary depending on which site you choose. Please see venue section above for details. Please note:

- Although the region will be booking your places at the zoo (etc), no one from region will be attending the sites so all arrangements will need to be made by the unit including transport, food, first aid, consent forms, risk assessment. The activity pack released in July will support you with your planning.
- All payments are non-refundable unless we are able to reallocate places.





How do we apply for places?

Please register your interest here. In July we will be sending you information to book your place.

On the register your interest form we will ask for your preferences on which site you would like to visit. We have 21 venues available. We believe that most Rainbow units should be able to get places at their preferred venue. However, some sites do have number restrictions so if a venue is oversubscribed, we will allocate places using a ballot system.

I have another local zoo/wildlife park or aquarium that isn't on the venue list, can my unit visit there instead?

Yes, if you have a local suitable site for this event that you would like to use with our activity pack then that is possible. You will be required to book your visit with this venue directly.

How do we confirm our booking and pay?

When we release the activity pack in July we will request the final participant numbers and payment. We will send you a confirmation email and a receipt once payment is received to confirm your places.

What happens if we have more participants than we originally booked and paid for?



You may be able to add to your booking if the capacity for the event has not been reached; please contact the region office on info@girlguidinglaser.org.uk.

What happens if we have fewer participants than we originally booked and paid for?

Unfortunately we will be unable to give refunds (unless a waiting list is in operation). If you know in advance that a/some members of your group will be unable to attend please consider transferring tickets locally, but please advise us of amendments to numbers by emailing info@girlguidinglaser.org.uk.

Can families join in?

This is an event for Rainbow members and unit leaders/helpers. Places are restricted. Parents are welcome to join you to make up the required adult ratio numbers.





How many adults should we have?

- The Girlguiding ratios for Rainbows are: Zoo visit - 1:5 (minimum 2 adults irrespective of size of unit)
- Sleepover - 1:4 (not including the event coordinator) with a maximum of 30 Rainbows and not exceeding 24 hours

Where should the sleepover take place?

The sleepover can take place anywhere that is suitable. Perhaps look at whether you are able to hold a sleepover at your unit meeting place. If you need some ideas, speak to your local residential adviser.

More information will be provided in the information pack in July. Please be aware that if you are combining the sleepover and the zoo visit, the girls must not be away from their parents for more than 24 hours.

What activities will we be doing at the venue and sleepover?

We will be issuing an activity pack in July which will include activities for both the zoo (etc) visit and the sleepover. This will also include essential information for planning this event.

Will there be a badge?

A badge will be created for this event. Information on how to order these will be included in the pack in July.

Will we be issued with tickets?

Each venue has different requirements so you will be informed after booking whether you will receive a ticket.

Will there be a dedicated First Aid point?

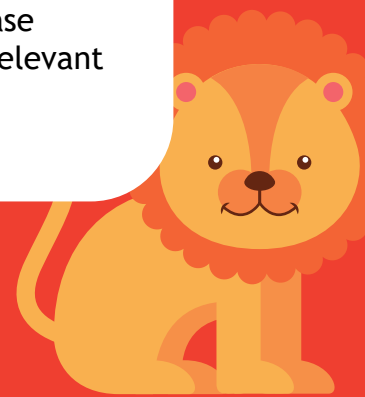
There will not be a designated First Aid point; leaders will need to take responsibility for First Aid for their own unit.

Is there an event consent form for participants?

Each unit will be responsible for issuing and collecting their own consent forms and arranging their own Emergency Home Contact. If you are organising a sleepover, girls and adults will also need to fill out a health form.

Is the event accessible to those with restricted mobility?

If you have anyone in your unit with accessibility requirements please inform region (info@girlguidinglaser.org.uk) who can speak to the relevant venue.





Will I have to do my own risk assessment?

You will be required to create your own risk assessment for the visit to the zoo (etc), sleepover and travelling to and from the event. However, included in the activity pack will be an example risk assessment to support you in creating your risk assessment.

What do we wear?

Please wear guiding uniform. Please ensure appropriate weather clothing is worn - sun hats, sun cream, waterproofs. Comfortable footwear should be worn.

Will we need to bring our own lunch?

Units will need to arrange their own lunch. Some of the venues will have facilities to purchase lunch on site but please check the venue website for details.

How can we share our experiences of the weekend?

Everyone will be encouraged to share photos and updates from their events using the hashtag #RainbowsGoWild and by tagging the region social media accounts in so that we can see and share. Please ensure you have up to date and correct photo consent for your Rainbows when sharing photographs publicly!

Region office will also create a press release and can put units in touch with their local PR Adviser to help fill this out and generate local press coverage. Please get in touch (info@girlguidinglaser.org.uk) if you have any questions regarding effectively sharing your stories with the public.

What further communications will I receive?

Once you have registered your interest you will be added to our main list. In July we will send out the activity pack and details of how to confirm your booking numbers. Once you have confirmed your booking we will send final details and confirm your places.

Contact details

If you have any queries please email info@girlguidinglaser.org.uk.

